

**TRAILER CARGO ½ TON 2 WHEELED AUST NO 5  
CENSUS CODE NO 6015G  
FITTING SKID SUPPORT  
MODIFICATION INSTRUCTION**

**Reference:** AC in WM No 21982/4.

**General**

1. **Introduction.** This instruction details the manufacturing and welding of a skid support to the subject trailer to prevent damage to the tail lights and turning indicators and is to be effected when requested by the units concerned.
2. **Estimated Manhours to Perform.** 2.2 (initial planning only).
3. **Priority.** Group 2.
4. **Vehicles Affected.** All subject vehicles.
5. **Item Affected.** Body.
6. **Action Required.** By RAEME tradesmen authorised to carry out repairs in accordance with WKSP A 850.
7. **Stores Required.** Available through normal RAAOC channels.

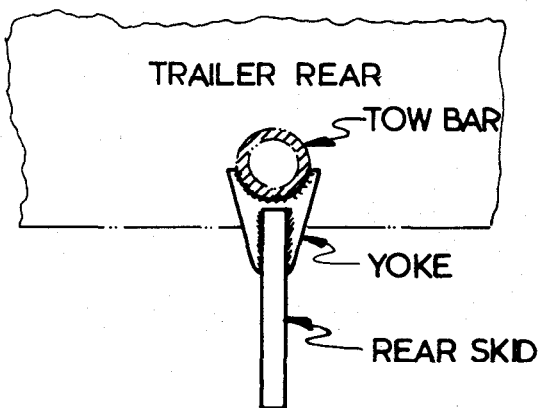
Item	DSN	Designation	Qty per Veh
1	9510-66-011-5444	STEEL BAR CARBON HOT ROLLED mild flat 1 in. by ½ in.	As reqd
2	9515-66-028-0742	STEEL PLATE CARBON MILD, ¼ in. thk by 9 in. wide	As reqd

8. **Stores Removed.** Nil.

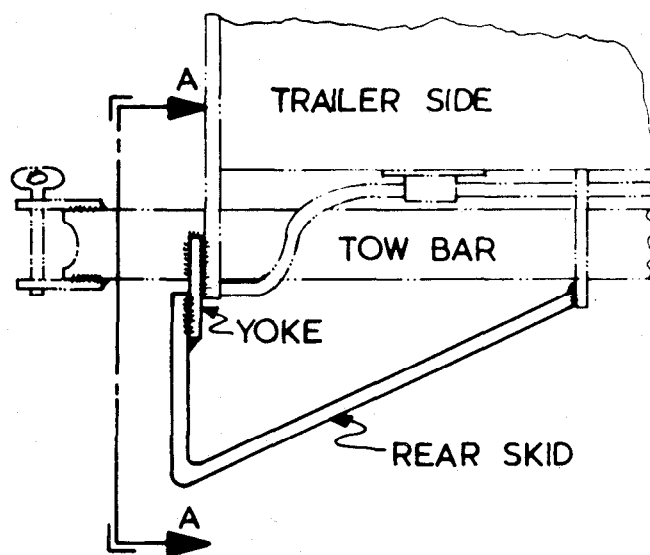
**Detail**

9. **Work Procedure.**

- a. Manufacture rear skid as detailed in figure 2, using item 1.
- b. Manufacture yoke as detailed in figure 3 using item 2.
- c. Weld yoke in position on rear skid and weld on trailer as shown in figure 1.
- d. Paint all surfaces affected in accordance with WKSP B 700.
- e. Strike out figure 2 on modification plate.

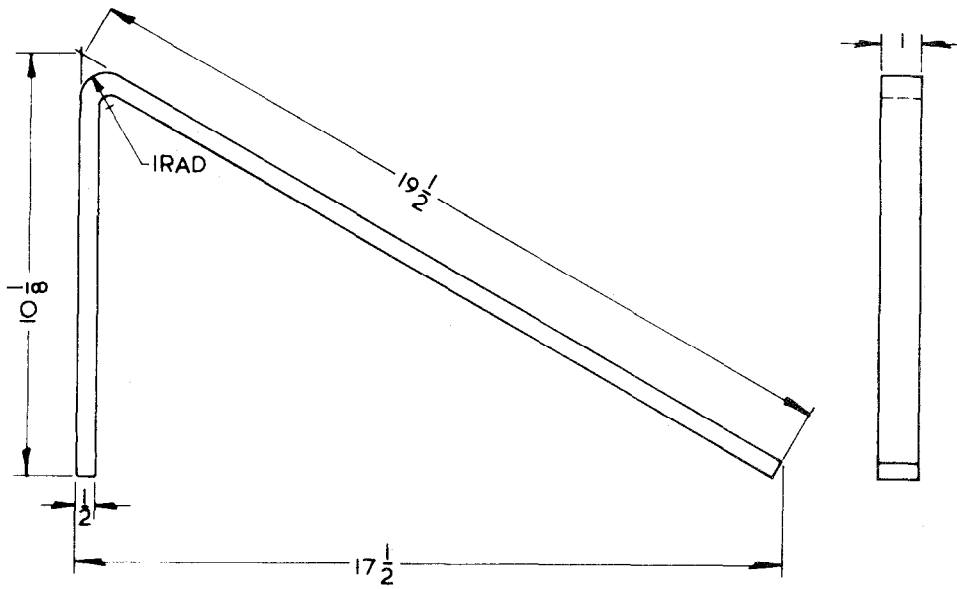


SECTION A-A



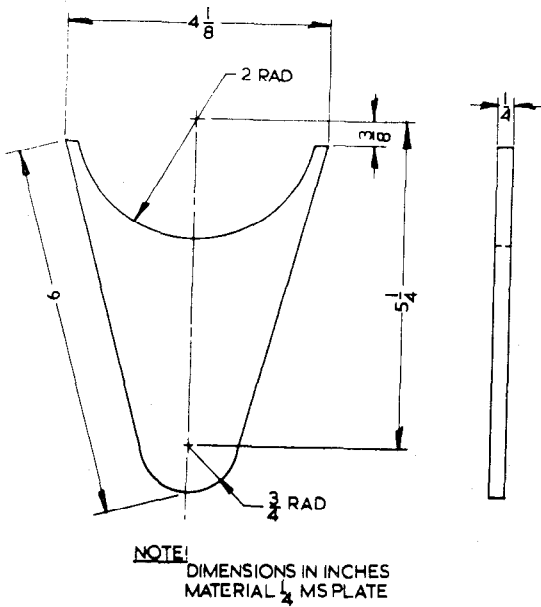
**NOTE!**  
WELDED CONSTRUCTION  
NOT TO SCALE

FIG 1 - TRAILER REAR SKID POSITION



NOTE!  
DIMENSIONS IN INCHES  
MATERIAL 1 X 1/2 MS BAR

FIG 2 - REAR SKID



NOTE!  
DIMENSIONS IN INCHES  
MATERIAL 1/2 MS PLATE

FIG 3 - YOKE DETAILS

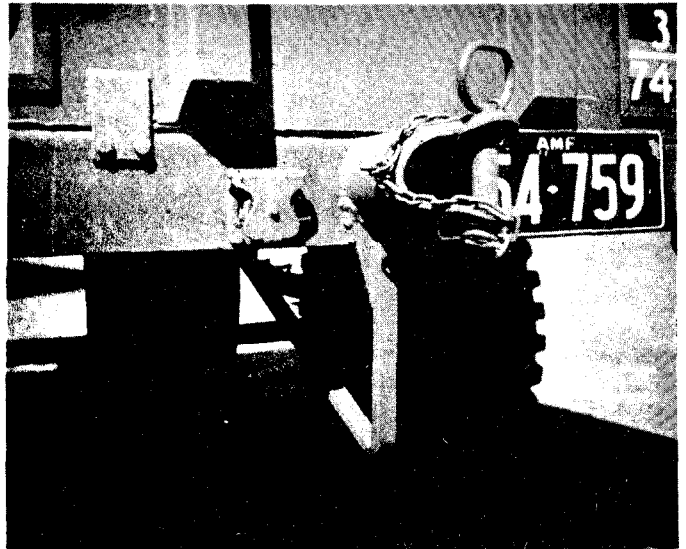


FIG 4 - GENERAL VIEW OF MODIFICATION

END